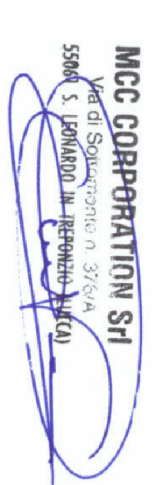


COMUNE DI PORCARI

Progetto per la realizzazione di
insediamento produttivo in variante al R.U.
ai sensi dell' art. 35 della L.R. 65/2014

Ubicazione: Strada Vicinale detta Via
Della Fossa Nuova e Via Avv. Del Magro

Proponente:
MCC CORPORATION S.R.L.

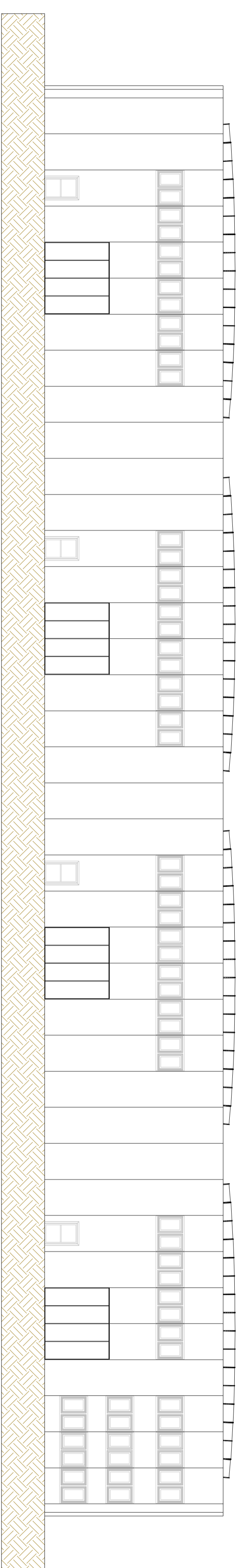


Capannone B: prospetti e sezioni

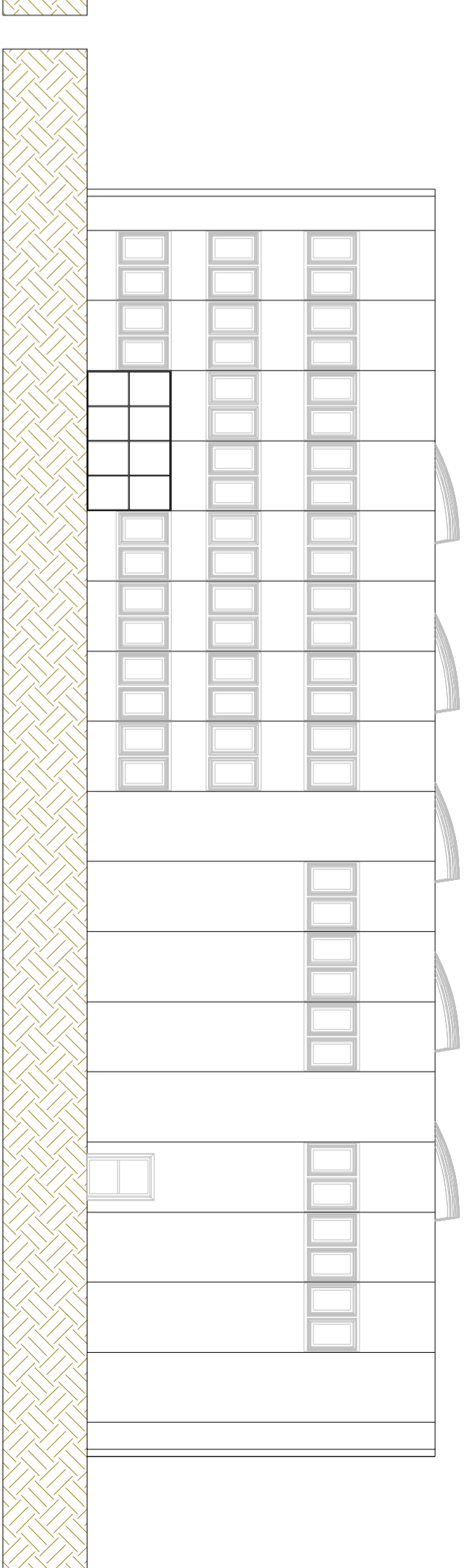


TAV.
11
SCALA
1:200 - 1:50

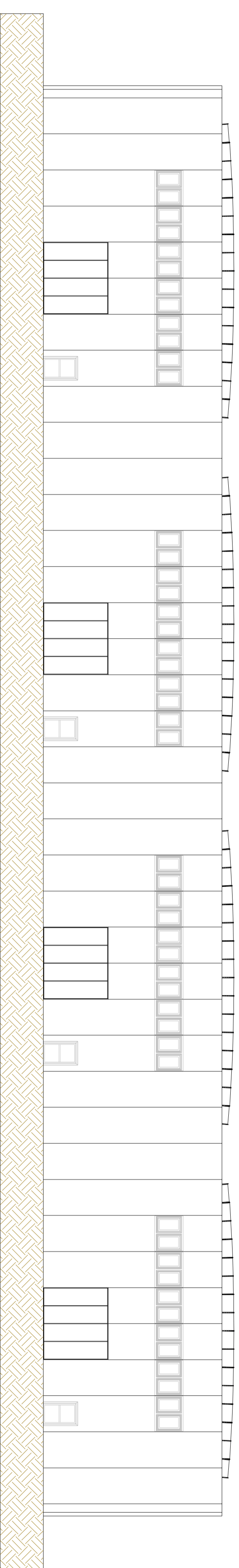
ING. NERIFABRIZIO
VIA SALLICCHI 609 - 58100 LUCECA
Tel./fax 0585349204
Cell. 3483804900
email: fabrizio@fabrizioing.it



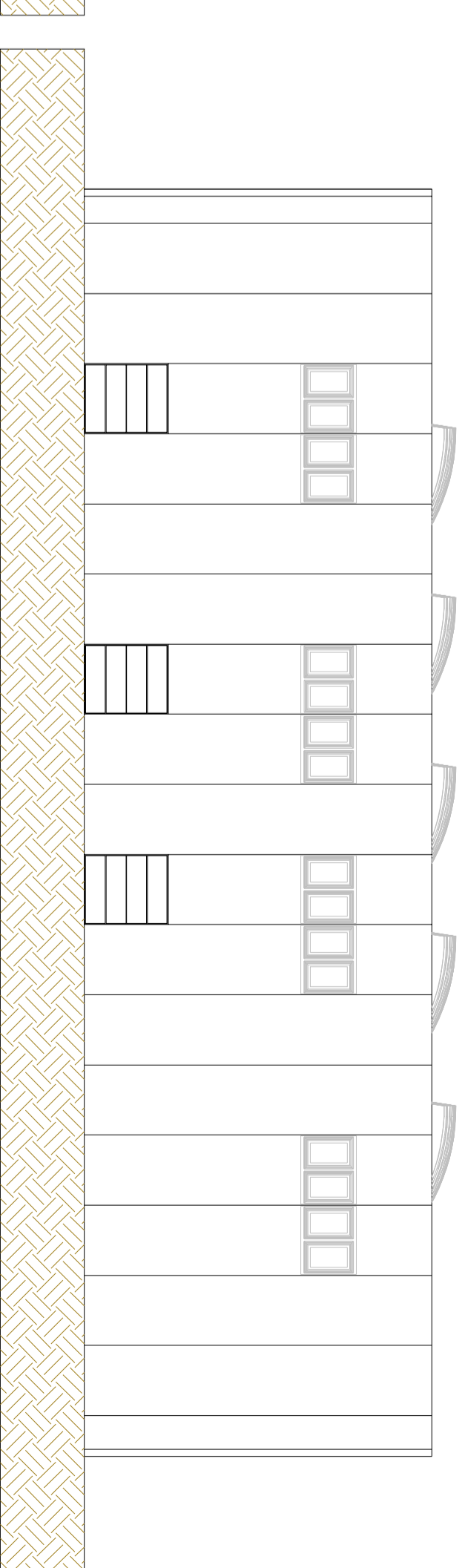
PROSPETTO 1



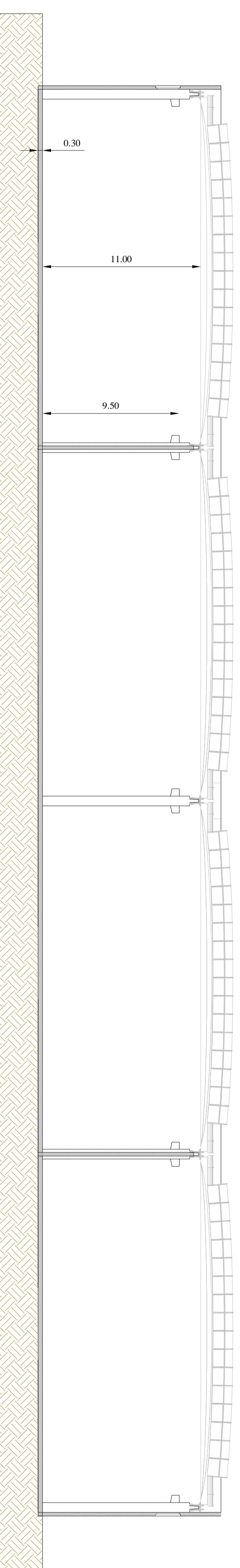
PROSPETTO 2



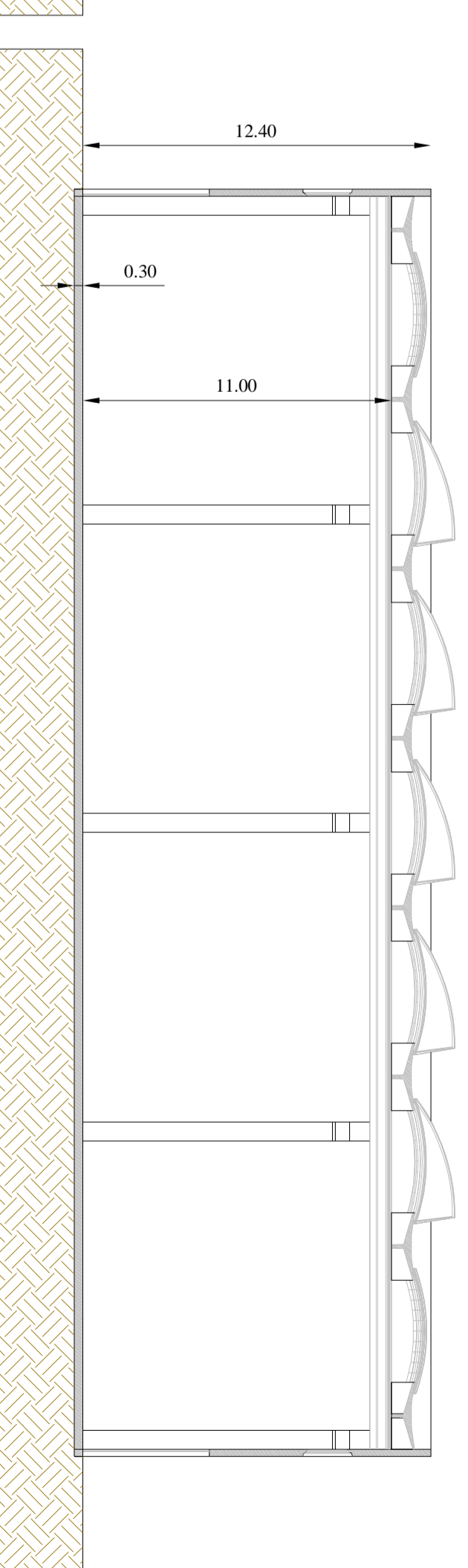
PROSPETTO 3



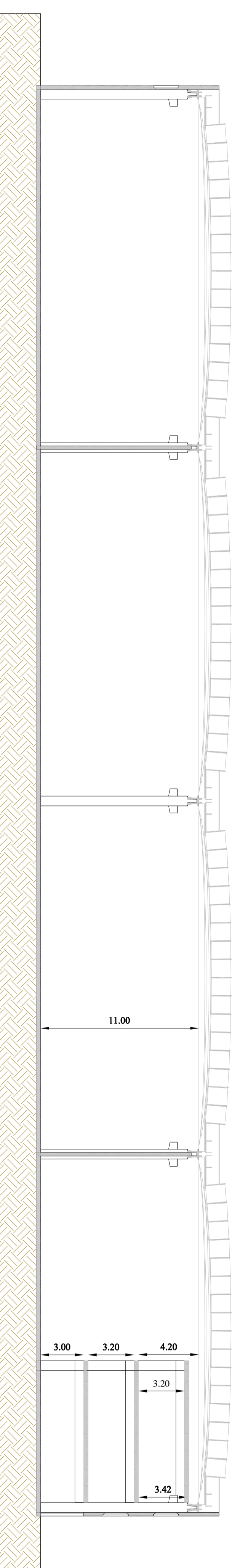
PROSPETTO 4



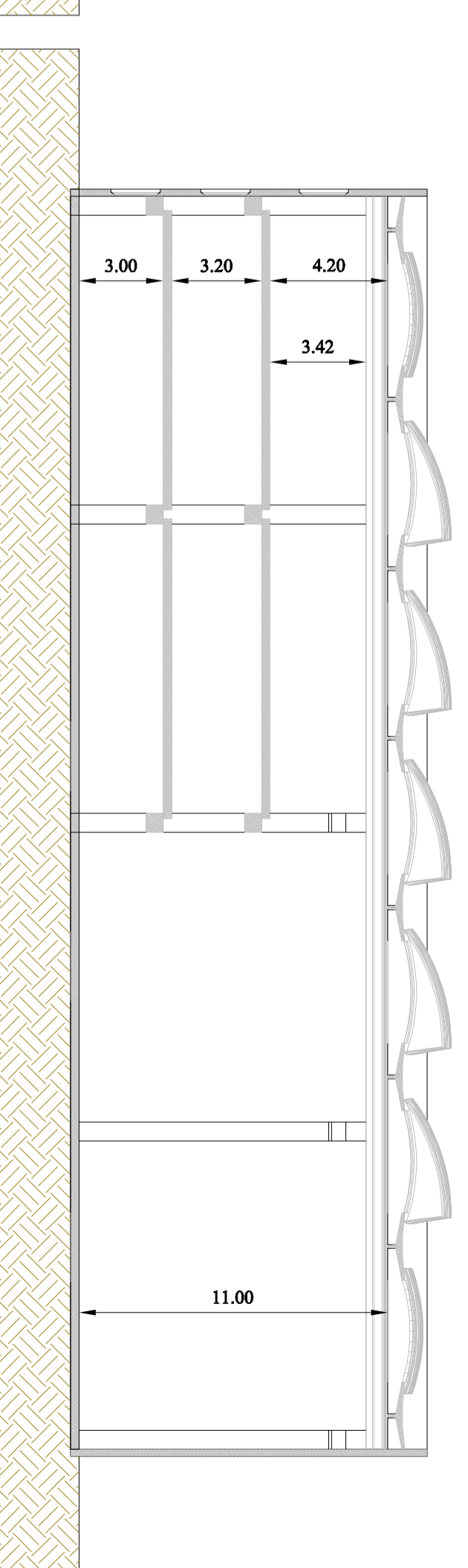
SEZIONE LONGITUDINALE ZONA MONOPIANO



SEZIONE TRASVERSALE ZONA MONOPIANO



SEZIONE LONGITUDINALE ZONA MONOPIANO



SEZIONE TRASVERSALE ZONA MONOPIANO